

once weekly

  
**mounjaro**®

(tirzepatide) injection 0.5 mL

2.5 mg | 5 mg | 7.5 mg | 10 mg | 12.5 mg | 15 mg

A Lilly Medicine

**LOOK INSIDE FOR:**

- How to start Mounjaro
- How to use the pen
- How to save

[mounjaro.lilly.com](https://mounjaro.lilly.com)

# Get Started Today

Please see Select Safety Information throughout the brochure and the Indication and Safety Summary with Warnings about possible thyroid tumors, including thyroid cancer, on pages 14-15. Please see Instructions for Use included with the pen.

once weekly

  
**mounjaro**<sup>®</sup>

(tirzepatide) injection 0.5 mL

2.5 mg | 5 mg | 7.5 mg | 10 mg | 12.5 mg | 15 mg

A Lilly Medicine

Adults with Type 2 Diabetes

**Mounjaro, along  
with diet and  
exercise, is proven  
to lower A1C.**

[mounjaro.lilly.com](https://mounjaro.lilly.com)

---

### **What is Mounjaro?**

Mounjaro is an injectable prescription medicine that is used along with diet and exercise to improve blood sugar (glucose) in adults with type 2 diabetes mellitus. It is not known if Mounjaro can be used in people who have had pancreatitis. Mounjaro is not for use in people with type 1 diabetes. It is not known if Mounjaro is safe and effective for use in children under 18 years of age.

### **Select Safety Information**

#### **Warning:**

**Tell your healthcare provider if you get a lump or swelling in your neck, hoarseness, trouble swallowing, or shortness of breath. These may be symptoms of thyroid cancer. In studies with rats, Mounjaro and medicines that work like Mounjaro caused thyroid tumors, including thyroid cancer. It is not known if Mounjaro will cause thyroid tumors, or a type of thyroid cancer called medullary thyroid carcinoma (MTC) in people. Do not take Mounjaro if you or any of your family have ever had MTC or if you have an endocrine system condition called Multiple Endocrine Neoplasia syndrome type 2 (MEN 2).**

# Table of Contents

- 4** Mounjaro lowers A1C
- 6** Mounjaro Savings Card
- 7** Mounjaro works differently\*
- 8** What to expect
- 10** Mounjaro is used once a week
- 12** Safe storage and handling
- 14** Indication and Safety Summary with Warnings

\*It directly activates GIP and GLP-1 pathways to help regulate blood sugar.

## Select Safety Information

Do not use Mounjaro if you or any of your family have ever had a type of thyroid cancer called MTC or if you have an endocrine system condition called MEN 2, or if you have had a serious allergic reaction to tirzepatide or any of the ingredients in Mounjaro.

**Please see Select Safety Information throughout the brochure and the Indication and Safety Summary with Warnings about possible thyroid tumors, including thyroid cancer, on pages 14-15. Please see Instructions for Use included with the pen.**

once weekly  
**mounjaro**<sup>®</sup>  
(tirzepatide) injection 0.5 mL  
2.5 mg | 5 mg | 7.5 mg | 10 mg | 12.5 mg | 15 mg  
A Lilly Medicine

# Mounjaro lowers A1C

For adults with type 2 diabetes along with diet and exercise.

3 OUT OF 4 PEOPLE  
REACHED AN

**A1C** **7** %  
UNDER

AND MAINTAINED IT\*\*

\*In studies with or without other diabetes medications, 75% to 90% of patients reached an A1C of less than 7%, with an average starting A1C of 7.9% to 8.6% across the 5-mg, 10-mg, and 15-mg doses.

\*\*Study results were measured at 40 and 52 weeks.

People taking Mounjaro  
lost up to

**25** <sup>LBS\*</sup>

Mounjaro is not a weight loss drug.


\*Individual results may vary. In studies with or without other diabetes medications, weight loss in adults ranged from 12 lb (5 mg) to 25 lb (15 mg).

## Select Safety Information

Mounjaro can cause serious side effects, including:

**Inflammation of your pancreas (pancreatitis).** Stop using Mounjaro and call your healthcare provider right away if you have severe pain in your stomach area (abdomen) that will not go away, with or without vomiting. You may feel the pain from your abdomen to your back.



once weekly   
**mounjaro**<sup>®</sup>  
(tirzepatide) injection 0.5 mL  
2.5 mg | 5 mg | 7.5 mg | 10 mg | 12.5 mg | 15 mg  
A Lilly Medicine





## Free digital starter kit

Text “MJ” to **85099** to download your free kit to help you get started on Mounjaro.

Please see Select Safety Information throughout the brochure and the Indication and Safety Summary with Warnings about possible thyroid tumors, including thyroid cancer, on pages 14-15. Please see Instructions for Use included with the pen.

once weekly  
**mounjaro**<sup>®</sup>  
(tirzepatide) injection 0.5 mL  
2.5 mg | 5 mg | 7.5 mg | 10 mg | 12.5 mg | 15 mg  
A Lilly Medicine

# Mounjaro Savings Card

## You may be eligible to save on Mounjaro\*

\*If you are eligible and commercially insured with Mounjaro coverage.

To sign up or activate a Mounjaro Savings Card, you can use one of the 2 options below.



Call  
**844-805-5807**



Go to  
**[mounjaro.lilly.com/savings-resources](https://mounjaro.lilly.com/savings-resources)**

Subject to Lilly USA, LLC's (Lilly's) right to terminate, rescind, revoke or amend the Mounjaro Savings Card Program ("Card" or "Program") eligibility criteria and/or Card terms and conditions which may occur at Lilly's sole discretion, without notice, and for any reason, the Card expires and savings end on 12/31/2025. **Card savings are not available to patients without commercial drug insurance or who are enrolled in any state, federal, or government funded healthcare program, including, without limitation, Medicaid, Medicare, Medicare Part D, Medicare Advantage, Medigap, DoD, VA, TRICARE®/CHAMPUS, or any state prescription drug assistance program.**

**MONTHLY AND ANNUAL MAXIMUM SAVINGS:** For patients with commercial drug insurance coverage for Mounjaro: You must have commercial drug insurance that covers Mounjaro®(tirzepatide) and a prescription for an approved use consistent with FDA-approved product labeling to pay as little as \$25 for a 1-month, 2-month, or 3-month prescription fill of Mounjaro. One month is defined as 28-days and up to 4 pens; 2 months is defined as 56 days and up to 8 pens; and 3 months is defined as 84 days and up to 12 pens. Card savings are subject to a maximum monthly savings of up to \$150 per 1-month prescription, \$300 per 2-month prescription, or \$450 per 3-month prescription fill and separate maximum annual savings of up to \$1,950 per calendar year. Card may be used for a maximum of up to 13 prescription fills per calendar year. Participation in the Program requires a valid patient HIPAA authorization. Subject to Lilly USA, LLC's ("Lilly") right to terminate, rescind, revoke, or amend Card eligibility criteria and/or Card terms and conditions which may occur at Lilly's sole discretion, without notice, and for any reason. Card expires and savings end on 12/31/2025.

For patients with commercial drug insurance who do not have coverage for Mounjaro: You must have commercial drug insurance that does not cover Mounjaro and a prescription for an approved use consistent with FDA-approved product labeling to obtain savings of up to \$463 off your 1-month prescription fill of Mounjaro. Month is defined as 28-days and up to 4 pens. Card savings are subject to a maximum monthly savings of up to \$463 and a separate maximum annual savings of up to \$6,019 per calendar year. Card may be used for a maximum of up to 13 prescription fills per calendar year. Participation in the Program requires a valid patient HIPAA authorization. Subject to Lilly's right to terminate, rescind, revoke, or amend Card eligibility criteria and/or Card terms and conditions which may occur at Lilly's sole discretion, without notice, and for any reason. Card expires and savings end on 12/31/2025.

### ADDITIONAL TERMS AND CONDITIONS:

You are responsible for any applicable taxes, fees and any amount that exceeds the monthly or annual maximum benefits. Savings card activation is required. This Card may be terminated, rescinded, revoked, or amended by Lilly at any time without notice and for any reason. Subject to additional terms and conditions. Eligibility criteria and terms and conditions for the Mounjaro Savings Card Program may change from time to time at Lilly's sole discretion and for any reason; the most current version can be found at <https://www.mounjaro.lilly.com/savings-resources#savings>. Card benefits void where prohibited by law. **THIS CARD IS NOT INSURANCE.**

once weekly  
**mounjaro®**  
(tirzepatide) injection 0.5 mL  
2.5 mg | 5 mg | 7.5 mg | 10 mg | 12.5 mg | 15 mg

Next up — How Mounjaro works

A Lilly Medicine

# Mounjaro works differently

It directly activates GIP and GLP-1 pathways to help regulate blood sugar.

Mounjaro can help your body both regulate blood sugar and decrease how much food you eat.\*

\*Mounjaro is not a weight loss drug.



Here's more of what you need to know about once-weekly Mounjaro. It's not insulin. **And, Mounjaro may start working to lower blood sugar from the first dose.<sup>†</sup>**

<sup>†</sup>The 2.5 mg starting dose is not meant for blood sugar control.

Visit **[mounjaro.lilly.com](https://mounjaro.lilly.com)** to learn about how Mounjaro works.

## Select Safety Information

**Low blood sugar (hypoglycemia).** Your risk for getting low blood sugar may be higher if you use Mounjaro with another medicine that can cause low blood sugar, such as a sulfonylurea or insulin.

**Signs and symptoms of low blood sugar may include** dizziness or light-headedness, sweating, confusion or drowsiness, headache, blurred vision, slurred speech, shakiness, fast heartbeat, anxiety, irritability, or mood changes, hunger, weakness, and feeling jittery.

Next up — How Mounjaro dosing works

Please see Select Safety Information throughout the brochure and the Indication and Safety Summary with Warnings about possible thyroid tumors, including thyroid cancer, on pages 14-15. Please see Instructions for Use included with the pen.

once weekly  
**mounjaro**<sup>®</sup>  
(tirzepatide) injection 0.5 mL  
2.5 mg | 5 mg | 7.5 mg | 10 mg | 12.5 mg | 15 mg  
A Lilly Medicine

# What to expect

**Everyone's response to Mounjaro is different. Your dose may change if you need additional blood sugar control.**

If your doctor has prescribed once-weekly Mounjaro, **you'll start with 2.5 mg**. After 4 weeks, **you'll move on to 5 mg**.\*

\*Mounjaro should be used once each week.

## Start



**2.5MG**  
FOR 4 WEEKS

## Continue



**5MG**  
FOR AT LEAST  
4 WEEKS

Mounjaro has additional dose options—7.5 mg, 10 mg, 12.5 mg, 15 mg. You and your doctor can find the one that's right for you.

## Select Safety Information

**Serious allergic reactions.** Stop using Mounjaro and get medical help right away if you have any symptoms of a serious allergic reaction, including: swelling of your face, lips, tongue or throat, problems breathing or swallowing, severe rash or itching, fainting or feeling dizzy, and very rapid heartbeat.



once weekly  
**mounjaro**<sup>®</sup>  
(tirzepatide) injection 0.5 mL  
2.5 mg | 5 mg | 7.5 mg | 10 mg | 12.5 mg | 15 mg  
A Lilly Medicine



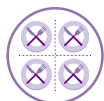
## Managing side effects

**Talk to your doctor if you have any side effect that bothers you or does not go away. Everyone can have a different experience, but these are the most common side effects patients had:**

- Nausea
- Constipation
- Diarrhea
- Indigestion
- Decreased appetite
- Stomach pain
- Vomiting

In studies, most nausea, vomiting, and diarrhea events occurred while the dose of Mounjaro was being increased. These events decreased over time.

**If you experience nausea, talk to your doctor. In the meantime, some people find the following tips may help:**



Eat smaller meals



Avoid fat or fatty foods



Stop eating when you feel full



Try eating bland foods like toast, crackers, or rice

### Select Safety Information

**Kidney problems (kidney failure).** In people who have kidney problems, diarrhea, nausea, and vomiting may cause a loss of fluids (dehydration), which may cause kidney problems to get worse. It is important for you to drink fluids to help reduce your chance of dehydration.

**Severe stomach problems.** Stomach problems, sometimes severe, have been reported with Mounjaro. Tell your healthcare provider if you have stomach problems that are severe or will not go away.

Next up — How to use and store Mounjaro

Please see Select Safety Information throughout the brochure and the Indication and Safety Summary with Warnings about possible thyroid tumors, including thyroid cancer, on pages 14-15. Please see Instructions for Use included with the pen.

once weekly  
**mounjaro**<sup>®</sup>  
(tirzepatide) injection 0.5 mL  
2.5 mg | 5 mg | 7.5 mg | 10 mg | 12.5 mg | 15 mg  
A Lilly Medicine

# Used once a week

## Mounjaro comes in a single-dose pen.

The Mounjaro single-dose pen is activated with the click of a button. Read the **Instructions for Use** included with your pen.

**Pick a day.** Take Mounjaro on the same day each week. It may help to set a reminder on your phone for this day. If you need to change the day, make sure there are at least 3 days (72 hours) in between doses.

**Miss a dose?** You can take the dose within 4 days (96 hours) after the missed dose. If more than 4 days have passed, skip the missed dose and take the next dose on the regularly scheduled day.

Do not take 2 doses of Mounjaro within 3 days of each other.



### How to use your Mounjaro Pen\*

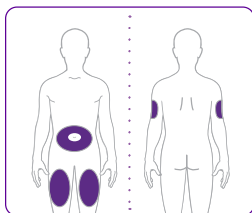
Watch a step-by-step video on using Mounjaro here:  
[mounjaro.lilly.com/how-to-use](https://mounjaro.lilly.com/how-to-use)

\*These are not the complete instructions for using Mounjaro. Before starting Mounjaro, your healthcare provider should show you how to use the pen. Read the Instructions for Use included with your pen or watch how to use the Mounjaro Pen at [mounjaro.com](https://mounjaro.com).

### Select Safety Information

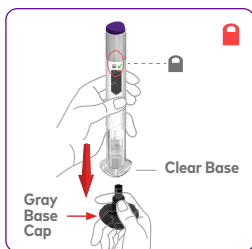
**Changes in vision.** Tell your healthcare provider if you have changes in vision during treatment with Mounjaro.

once weekly  
**mounjaro**<sup>®</sup>  
(tirzepatide) injection 0.5 mL  
2.5 mg | 5 mg | 7.5 mg | 10 mg | 12.5 mg | 15 mg  
A Lilly Medicine



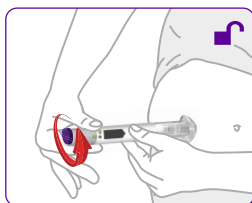
### Choose your injection site

- Your healthcare provider can help you choose the injection site that is best for you.
- You or another person can inject the medicine in your stomach or thigh.
- Another person should give you the injection in the back of the upper arm



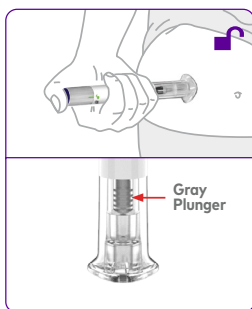
### Pull off the gray base cap

- Make sure the pen is **Locked** until it's on your skin and ready to inject.
- **Pull** the gray base cap off and throw it away in the trash.
- **Do not** put the gray base cap back on and do not touch the needle.



### Place on the skin, then Unlock

- **Place** the clear base flat against your skin at the injection site.
- **Unlock** by turning the lock ring.



### Press and Hold up to 10 seconds

- **Press and Hold** the purple injection button.
- **Listen** for:  
1st click = injection started  
2nd click = injection completed
- You will know your injection is complete when the gray plunger is visible.
- After your injection, place the used pen in a sharps container.

Next up — How to use and store Mounjaro (cont'd)

Please see Select Safety Information throughout the brochure and the Indication and Safety Summary with Warnings about possible thyroid tumors, including thyroid cancer, on pages 14-15. Please see Instructions for Use included with the pen.

once weekly  
**mounjaro**<sup>®</sup>  
 (tirzepatide) injection 0.5 mL  
 2.5 mg | 5 mg | 7.5 mg | 10 mg | 12.5 mg | 15 mg  
 A Lilly Medicine

# Safe storage and handling

## Storing Mounjaro Pens

- Store the pens in their original carton to protect the pen from light.
- Keep Mounjaro in the refrigerator at 36°F to 46°F (2°C to 8°C).
- **Do not** freeze your Mounjaro Pens.
- The pen has glass parts. Handle it carefully. If you drop the pen on a hard surface, **do not** use it. Use a new pen instead.

**If you're traveling or will be away from home, Mounjaro can be kept for up to 21 days outside of the refrigerator. Just make sure the temperature doesn't get higher than 86°F (30°C).**

## Disposing of Mounjaro Pens\*



- Safely dispose of your pens in a sharps container.
- If you don't have a sharps container, you can reuse an empty laundry bottle or a coffee can. Just make sure it:
  - Has a closeable lid
  - Is puncture-resistant
  - Is labeled as hazardous waste

\*Keep the container out of reach of children. Do not recycle your used sharps container. Check the regulations in your area for how to dispose of the container properly.

## Select Safety Information

**Gallbladder problems.** Gallbladder problems have happened in some people who use Mounjaro. Tell your healthcare provider right away if you get symptoms of gallbladder problems, which may include pain in your upper stomach (abdomen), fever, yellowing of skin or eyes (jaundice), and clay-colored stools.

once weekly  
**mounjaro**<sup>®</sup>  
(tirzepatide) injection 0.5 mL  
2.5 mg | 5 mg | 7.5 mg | 10 mg | 12.5 mg | 15 mg  
A Lilly Medicine



Please see Select Safety Information throughout the brochure and the Indication and Safety Summary with Warnings about possible thyroid tumors, including thyroid cancer, on pages 14-15. Please see Instructions for Use included with the pen.

once weekly  
**mounjaro**<sup>®</sup>  
(tirzepatide) injection 0.5 mL  
2.5 mg | 5 mg | 7.5 mg | 10 mg | 12.5 mg | 15 mg  
A Lilly Medicine



## INDICATION AND SAFETY SUMMARY WITH WARNINGS

Mounjaro® (mown-JAHR-OH) is an injectable medicine for adults with type 2 diabetes used along with diet and exercise to improve blood sugar (glucose).

- o It is not known if Mounjaro can be used in people who have had inflammation of the pancreas (pancreatitis). Mounjaro is not for use in people with type 1 diabetes. It is not known if Mounjaro is safe and effective for use in children under 18 years of age.

**Warnings** - Mounjaro may cause tumors in the thyroid, including thyroid cancer. Watch for possible symptoms, such as a lump or swelling in the neck, hoarseness, trouble swallowing, or shortness of breath. If you have any of these symptoms, tell your healthcare provider.

- Do not use Mounjaro if you or any of your family have ever had a type of thyroid cancer called medullary thyroid carcinoma (MTC).
- Do not use Mounjaro if you have Multiple Endocrine Neoplasia syndrome type 2 (MEN 2).
- Do not use Mounjaro if you are allergic to it or any of the ingredients in Mounjaro.

**Mounjaro may cause serious side effects, including:**

**Inflammation of the pancreas (pancreatitis).** Stop using Mounjaro and call your healthcare provider right away if you have severe pain in your stomach area (abdomen) that will not go away, with or without vomiting. You may feel the pain from your abdomen to your back.

**Low blood sugar (hypoglycemia).** Your risk for getting low blood sugar may be higher if you use Mounjaro with another medicine that can cause low blood sugar, such as a sulfonylurea or insulin. **Signs and symptoms of low blood sugar may include** dizziness or light-headedness, sweating, confusion or drowsiness, headache, blurred vision, slurred speech, shakiness, fast heartbeat, anxiety, irritability, or mood changes, hunger, weakness and feeling jittery.

**Serious allergic reactions.** Stop using Mounjaro and get medical help right away if you have any symptoms of a serious allergic reaction, including swelling of your face, lips, tongue or throat, problems breathing or swallowing, severe rash or itching, fainting or feeling dizzy, and very rapid heartbeat.

**Kidney problems (kidney failure).** In people who have kidney problems, diarrhea, nausea, and vomiting may cause a loss of fluids (dehydration), which may cause kidney problems to get worse. It is important for you to drink fluids to help reduce your chance of dehydration.

**Severe stomach problems.** Stomach problems, sometimes severe, have been reported in people who use Mounjaro. Tell your healthcare provider if you have stomach problems that are severe or will not go away.

**Changes in vision.** Tell your healthcare provider if you have changes in vision during treatment with Mounjaro.

**Gallbladder problems.** Gallbladder problems have happened in some people who use Mounjaro. Tell your healthcare provider right away if you get symptoms of gallbladder problems, which may include pain in your upper stomach (abdomen), fever, yellowing of skin or eyes (jaundice), and clay-colored stools.

**Food or liquid getting into the lungs during surgery or other procedures that use anesthesia or deep sleepiness (deep sedation).** Mounjaro may increase the chance of food getting into your lungs during surgery or other procedures. Tell all your healthcare providers that you are taking Mounjaro before you are scheduled to have surgery or other procedures.

### Common side effects

The most common side effects of Mounjaro include nausea, diarrhea, decreased appetite, vomiting, constipation, indigestion, and stomach (abdominal) pain. These are not all the possible side effects of Mounjaro. Talk to your healthcare provider about any side effect that bothers you or doesn't go away.

## INDICATION AND SAFETY SUMMARY WITH WARNINGS (CON'T)

Tell your healthcare provider if you have any side effects. **You can report side effects at 1-800-FDA-1088 or [www.fda.gov/medwatch](http://www.fda.gov/medwatch).**

### Before using Mounjaro

- **Your healthcare provider should show you how to use Mounjaro before you use it for the first time.**
- **Talk to your healthcare provider about low blood sugar and how to manage it.**
- **If you take birth control pills by mouth, talk to your healthcare provider before you use Mounjaro. Birth control pills may not work as well while using Mounjaro.** Your healthcare provider may recommend another type of birth control for 4 weeks after you start Mounjaro and for 4 weeks after each increase in your dose of Mounjaro.

### Review these questions with your healthcare provider:

- ☐ Do you have other medical conditions, including problems with your pancreas or kidneys, or severe problems with your stomach, such as slowed emptying of your stomach (gastroparesis) or problems digesting food?
- ☐ Do you take other diabetes medicines, such as insulin or sulfonylureas?
- ☐ Do you have a history of diabetic retinopathy?
- ☐ Are you scheduled to have surgery or other procedures that use anesthesia or deep sleepiness (deep sedation)?
- ☐ Are you pregnant, plan to become pregnant, breastfeeding, or plan to breastfeed? It is not known if Mounjaro will harm your unborn baby or pass into your breast milk.
- ☐ Do you take any other prescription medicines or over-the-counter drugs, vitamins, or herbal supplements?

### How to take

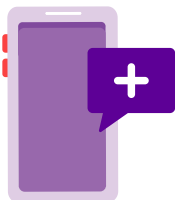
- Read the **Instructions for Use** that come with Mounjaro.
- Use Mounjaro exactly as your healthcare provider says.
- Mounjaro is injected under the skin (subcutaneously) of your stomach (abdomen), thigh, or upper arm.
- **Use Mounjaro 1 time each week, at any time of the day.**
- **Do not** mix insulin and Mounjaro together in the same injection.
- You may give an injection of Mounjaro and insulin in the same body area (such as your stomach area), but not right next to each other.
- Change (rotate) your injection site with each weekly injection. **Do not** use the same site for each injection.
- If you take too much Mounjaro, call your healthcare provider or seek medical advice promptly.

### Learn more

Mounjaro is a prescription medicine available as a pre-filled single-dose pen in 2.5 mg, 5 mg, 7.5 mg, 10 mg, 12.5 mg, or 15 mg per 0.5 mL injection. For more information, call 1-833-807-MJRO (833-807-6576) or go to [www.mounjaro.lilly.com](http://www.mounjaro.lilly.com).

This summary provides basic information about Mounjaro but does not include all information known about this medicine. Read the information that comes with your prescription each time your prescription is filled. This information does not take the place of talking with your healthcare provider. Be sure to talk to your healthcare provider about Mounjaro and how to take it. Your healthcare provider is the best person to help you decide if Mounjaro is right for you.

Mounjaro® and its delivery device base are registered trademarks owned or licensed by Eli Lilly and Company, its subsidiaries, or affiliates. TRICARE® is a registered trademark of the Department of Defense (DoD), DHA



## Share your story with Mounjaro

Reach out by calling **1-833-807-6576**.  
We might be back in touch to talk  
about sharing your experiences in our  
materials, to help motivate others.

We know we can't replace the advice of your healthcare provider, but we are here to help you any way we can. If you have additional questions, call **1-833-807-MJRO (833-807-6576)**.



once weekly  
**mounjaro**<sup>®</sup>  
(tirzepatide) injection 0.5 mL  
2.5 mg | 5 mg | 7.5 mg | 10 mg | 12.5 mg | 15 mg  
A Lilly Medicine

PP-TR-US-2743 03/2025 © Lilly USA,  
LLC 2025. All rights reserved.

[mounjaro.lilly.com](https://mounjaro.lilly.com)